

47/126

126

COUNTRYPARK AT BOCA RATON, II PART OF BOCA RIO, A P.U.D. SITUATE IN THE NORTHEAST ONE QUARTER OF SECTION 32, TOWNSHIP 47 SOUTH, RANGE 42 EAST, PALM BEACH COUNTY, FLORIDA.

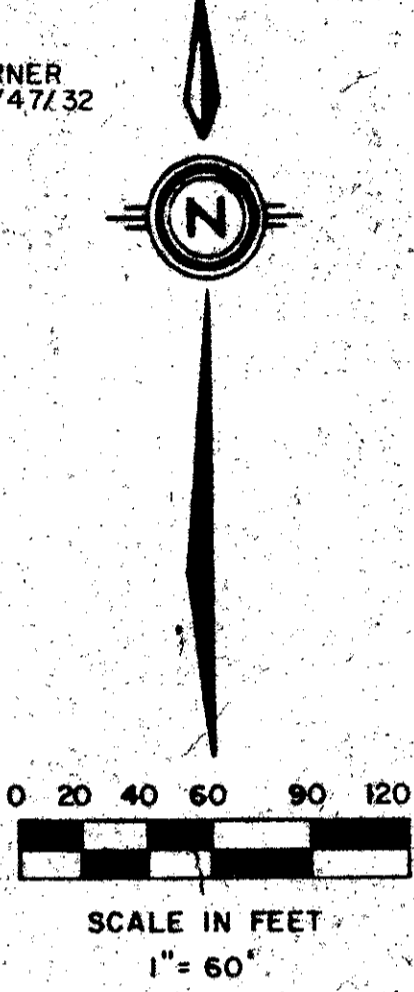
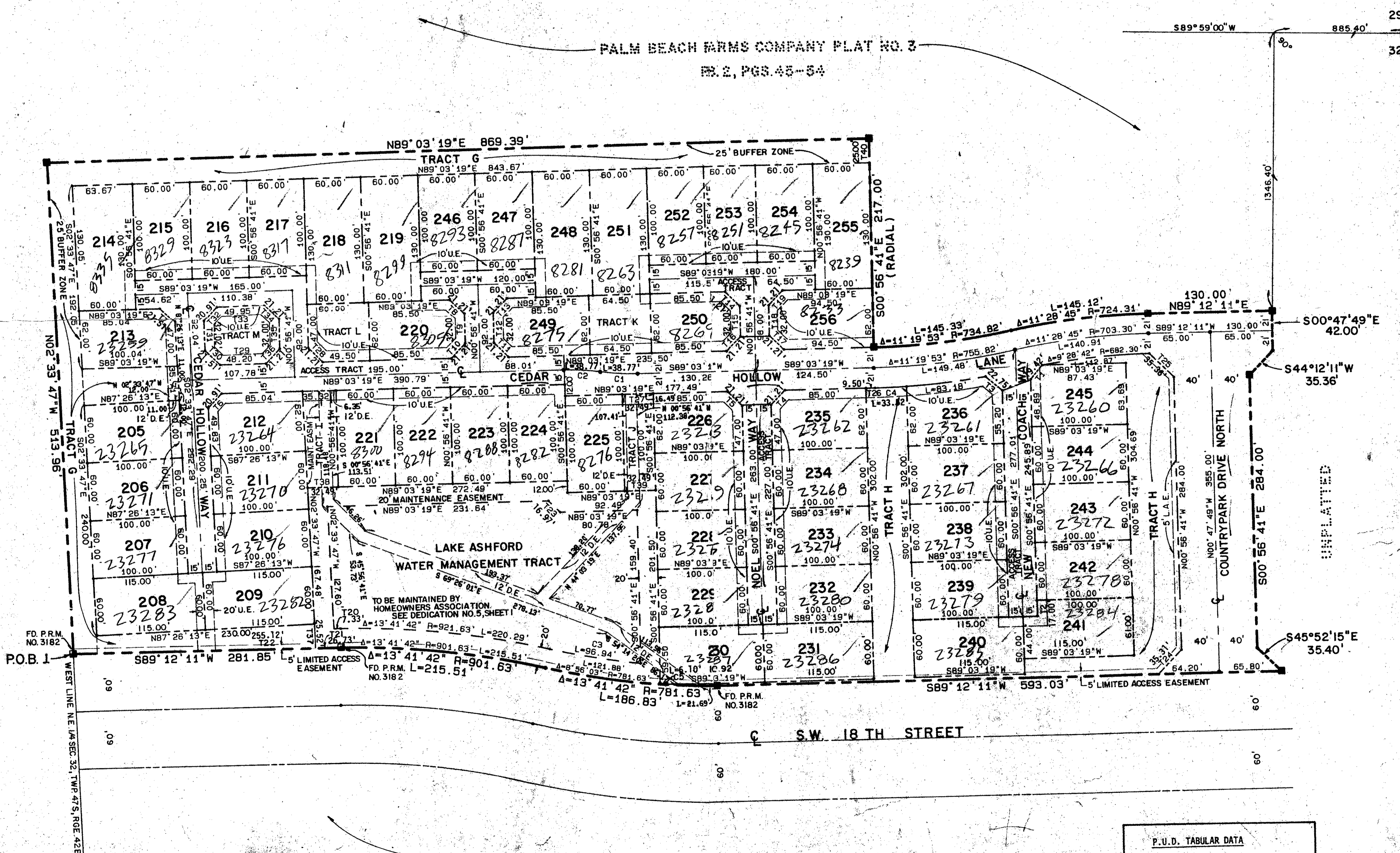
NOVEMBER, 1983 SHEET 2 OF 3

37/47/42
SUBDIVISION: *Countrypark 2*
BOOK 477 PAGE 126
FLOOD ZONE: A-0-1 FLOOD MAP #240B
QUAD # 54 ZONING RS
SE PUD: ZIP CODE 33433
PUD NAME Boca Rio

STATE OF FLORIDA
COUNTY OF PALM BEACH
THIS PLAT WAS FILED FOR
RECORD AT _____ DAY OF _____
AD. 1984 AND DULY RECORDED
IN PLAT-BOOK _____ ON PAGES
_____ AND _____
JOHN B. DUNKLE, CLERK
CIRCUIT COURT
BY: _____, D.C.

PALM BEACH FARMS COMPANY PLAT NO. 3
B.B. 2, PGS. 45-54

PALM BEACH FARMS COMPANY PLAT NO. 3
B.B. 2, PGS. 45-54



NO.	DELTA	RADIUS	LENGTH
C1	8°53'06"	250.00	38.77
C2	8°53'06"	250.00	38.77
C3	7°17'33"	761.63	96.94
C4	2°28'19"	776.82	33.52
C5	0°26'50"	761.63	6.10

NO.	BEARING	DISTANCE
T1	N89°23'24"E	19.42'
T2	S00°56'41"E	17.00'
T3	S50°14'54"E	22.75'
T4	N44°03'19"E	21.21'
T5	S45°56'41"E	21.21'
T6	N43°14'46"E	20.91'
T7	S46°45'14"E	21.51'
T8	S45°56'41"E	21.21'
T9	S00°56'41"E	32.00'
T10	S44°03'19"W	21.21'
T11	N45°56'41"W	21.21'
T12	N00°56'41"W	32.00'
T13	N44°03'19"W	21.21'
T14	S45°56'41"E	21.21'
T15	S00°56'41"E	32.00'
T16	S44°03'19"W	21.21'
T17	N45°56'41"W	21.21'
T18	N00°56'41"W	32.00'
T19	N44°03'19"E	21.21'
T20	S88°30'32"W	7.33'
T21	S89°12'11"W	26.73'
T22	S89°12'11"W	255.12'
T23	S45°56'41"E	16.97'
T24	N44°07'45"E	35.34'
T25	N45°47'49"W	35.35'
T26	S89°03'19"W	9.50'
T27	S89°03'19"W	32.49'
T28	S45°56'41"E	21.21'
T29	S89°03'19"W	48.20'
T30	N46°45'14"W	21.51'
T31	N02°33'47"W	32.02'
T32	N43°14'46"E	20.91'
T33	N89°03'19"E	49.95'
T34	S45°56'41"E	21.21'
T35	S00°56'41"E	32.00'
T36	S44°03'18"W	21.21'
T37	N02°33'47"W	25.52'
T38	N89°03'19"E	32.49'
T39	N89°03'19"E	32.49'
T40	N00°56'41"W	25.00'

P.U.D. TABULAR DATA

AREA	13.93 Acres
UNITS	52 Units
DENSITY	3.62 DU/AC
OPEN SPACE/RECREATION	2.26 AC
ROADS & R/W's	2.67 AC
WATER BODIES	1.55 AC
ZONING CLASSIFICATION	RS

Meridian Surveying and mapping inc.
WEST PALM BEACH, FLORIDA
DRAWN: M.E.H. DATE: NOV 1983
CHECKED: SCALE: 1" = 60'
DRAWING NO: 83-P-029
COUNTRYPARK AT BOCA RATON II
PART OF BOCA RIO, A P.U.D.

COUNTRYPARK AT BOCA RATON, I
B.B. 46, PGS. 90-101

0213-002